



RECP #: 752664

RECORDED 5/8/2019 AT 1:11 PM BK# 2620 PG# 1706
Debra K. Lee, CLERK OF LARAMIE COUNTY, WY PAGE 1 OF 1

STATE OF WYOMING CORNER RECORD

(In compliance with the CORNER PERPETUATION AND FILING ACT, Wyoming Statutes, 1997 Section 33-29-140, et. seq., and the Rules and Regulations of the Board of Registrations for Professional Engineers and Professional Land Surveyors)

NORTHEAST CORNER SECTION 1, T. 17 N., R. 63 W., 6TH P.M., LARAMIE COUNTY, WYOMING

GLO: SET A SANDSTONE 16X14X5, 11 IN. DEEP, WITH 6 MARKS ON EACH OF ITS FOUR FACES, SET TO THE CARDINAL POINTS AND RAISED A MOUND OF STONE AROUND IT FOR CORNER TO TOWNSHIPS 17 AND 18 NORTH, RANGES 63 AND 62 WEST.

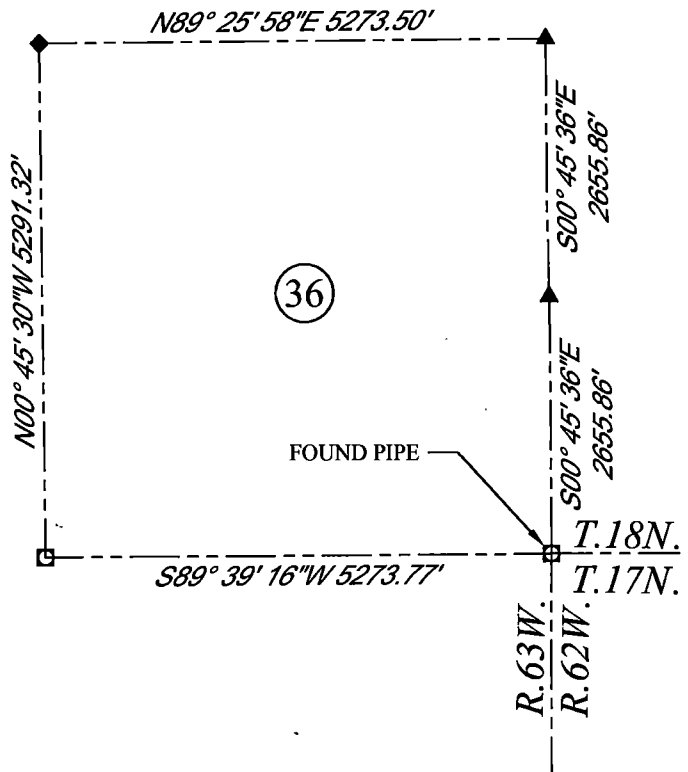
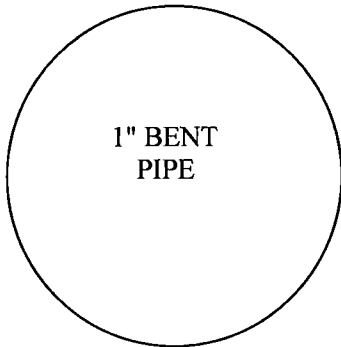
FOUND: A 1" BENT PIPE. THE PIPE IS 10' NORTH OF A SOUTH FENCE LINE, AND IN LINE WITH A EAST AND WEST FENCE LINE.



SCALE: NONE
NORTH DETERMINED BY
G.P.S OBSERVATIONS

FOUND: 1" BENT PIPE

SET: NOTHING



LEGEND:

- FOUND BLM CAP
- FOUND USFS CAP
- FOUND STONE
- FOUND PRIVATE MONUMENT
- ◆ CALCULATED POSITION
- ▲ SET MONUMENT (LS10245)
- SECTION LINE

DATE OF FIELD WORK: 8/9/2018 OFFICE REFERENCE: MERIDEN

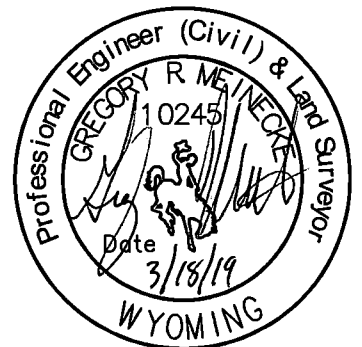
CROSS INDEX DIAGRAM

	1	2	3	4	5	6	7	8	9	10	11	12	13	14	15	16	17	18	19	20	21	22	23	24	25	
A																										
B																										
C		6																								
D						5																				
E																										
F																										
G						7																				
H																										
J																										
K																										
L						18																				
M																										
N																										
O																										
P						19																				
Q																										
R																										
S																										
T						30																				
U																										
V																										
W																										
X						31																				
Y																										
Z																										
	1	2	3	4	5	6	7	8	9	10	11	12	13	14	15	16	17	18	19	20	21	22	23	24	25	

WOOD
2615 AVIATION DRIVE
SHERIDAN, WY 82801
PH: 307-675-6400

wood.

THIS CORNER RECORD WAS
PREPARED BY ME OR UNDER
MY DIRECTION AND
SUPERVISION,
SEAL AND SIGNATURE



CORNER NAME: NORTHEAST SECTION: 1 T. 17 N., R. 63 W. ; 6TH P.M. CROSS-INDEX # A-25
SBRPELS/PLSW: MARCH 1994; PLSW JANUARY 1998